

JOHN GEORGE

Delivering Performance Since 1725

johngeorge.co.uk
sales@johngeorge.co.uk

Wholesale distributors to merchants
in the building, roofing, fencing and agricultural trades

GRIPIT Ultimate Plasterboard Fixings

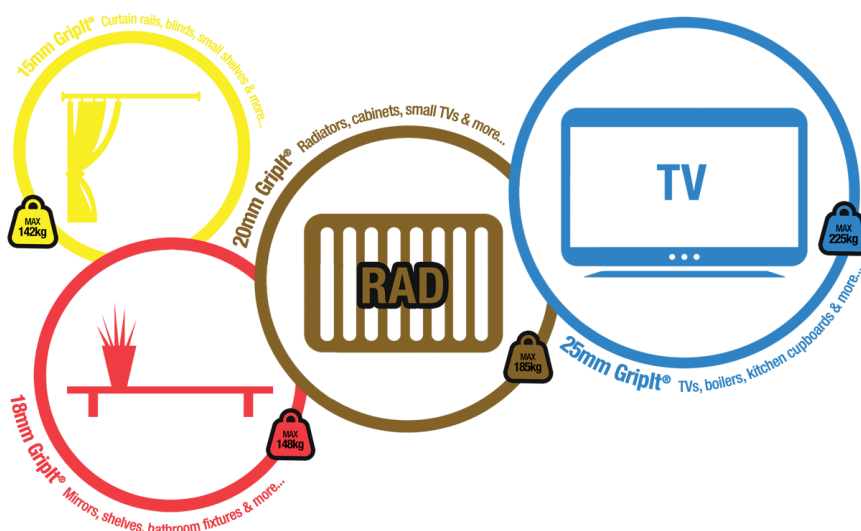
A simple method of wall hanging on plasterboard - popular for its ease of use, high performance and convenience.

- Colour coded - four different colours represent each Gritpit size which can hold different weights in plasterboard
- Simple - drill, tap and turn to install the Gritpits
- Reusable - turn wing screws to release and remove
- Convenient - sold with the recommended screws, so no need to purchase additional fixings
- Pack sizes - provided in packs of 8no or 25no
- Euroslotted and barcoded packs - for ease of merchandising

Product Information



Which colour Gritpit depends on what you want to fix...



Our Range

Colour	Size	Small Bags		Large Bags	
		Code	Qty	Code	Qty
	15mm	MGF15008	8NO	MGF15025	25NO
	18mm	MGF18008	8NO	MGF18025	25NO
	20mm	MGF20008	8NO	MGF20025	25NO
	25mm	MGF25008	8NO	MGF25025	25NO

WEST:

Tel: 01275 335810 Fax: 01275 349203

CENTRAL:

Tel: 0118 941 1234 Fax: 0118 945 1059

EAST:

Tel: 01268 663130 Fax: 01268 663131

JOHN GEORGE

Delivering Performance Since 1725

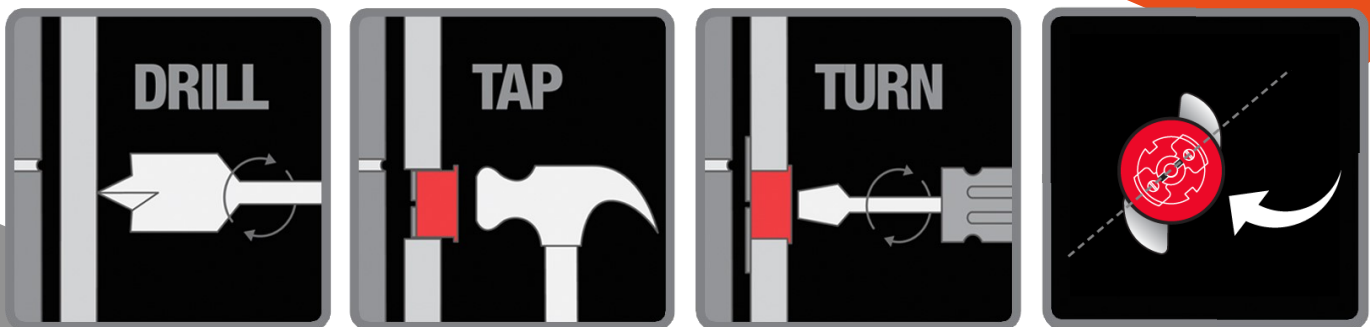
johngeorge.co.uk
sales@johngeorge.co.uk

Wholesale distributors to merchants
in the building, roofing, fencing and agricultural trades

GRIPIT Ultimate Plasterboard Fixings

Product Information

Fixing Information & Correct Positioning



Weights & Loads

SHEAR LOAD	Gripit	Size	Substrate Thickness	Min Edge Distance	Safe Load*		Max Load*	
					50mm	75mm	150mm	50mm
Weight suspended from a fixing, mounted in a vertical wall with a load or weight attached to that fixing and acting vertically downwards.		15mm	Up to 15mm	20mm	71kg	142kg		
		18mm	Up to 15mm	24mm	74kg	148kg		
		20mm	Up to 15mm	28mm	93kg	185kg		
		25mm	Up to 15mm	28mm	113kg	225kg		
TENSION LOAD The force applied to the fixing is "pulled" away from the wall.		15mm	Up to 15mm	20mm	20kg	38kg		
		18mm	Up to 15mm	24mm	20kg	39kg		
		20mm	Up to 15mm	28mm	20kg	39kg		
		25mm	Up to 15mm	28mm	20kg	39kg		
CANTILEVER LOAD The weight applied along the length of a horizontal beam at a known distance from a vertical wall and acting vertically downwards.		15mm	Safe Load*			Max Load*		
			50mm	75mm	150mm	50mm	75mm	150mm
		18mm	35kg	30kg	18kg	70kg	60kg	36kg
			25kg	31kg	12kg	50kg	62kg	23kg
20mm	33kg	35kg	24kg	66kg	70kg	48kg		
	30kg	20kg	25kg	61kg	40kg	50kg		

* Independently tested on 15mm plasterboard

WEST:

Tel: 01275 335810 Fax: 01275 349203

CENTRAL:

Tel: 0118 941 1234 Fax: 0118 945 1059

EAST:

Tel: 01268 663130 Fax: 01268 663131